

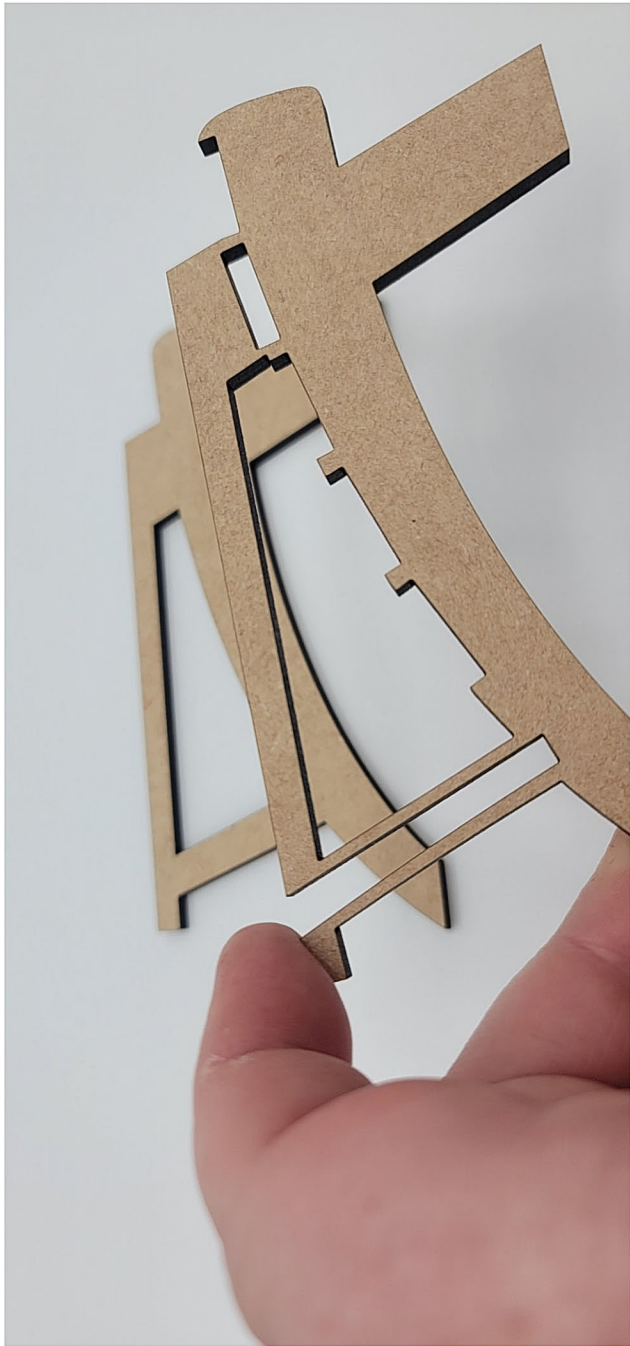
Motor City Dolly DIY Adirondack Chair Assembly Instructions (for all variants)

These instructions will walk you through making your own beach chair for Blythe. To complete the kit, you will need:

Wood Glue

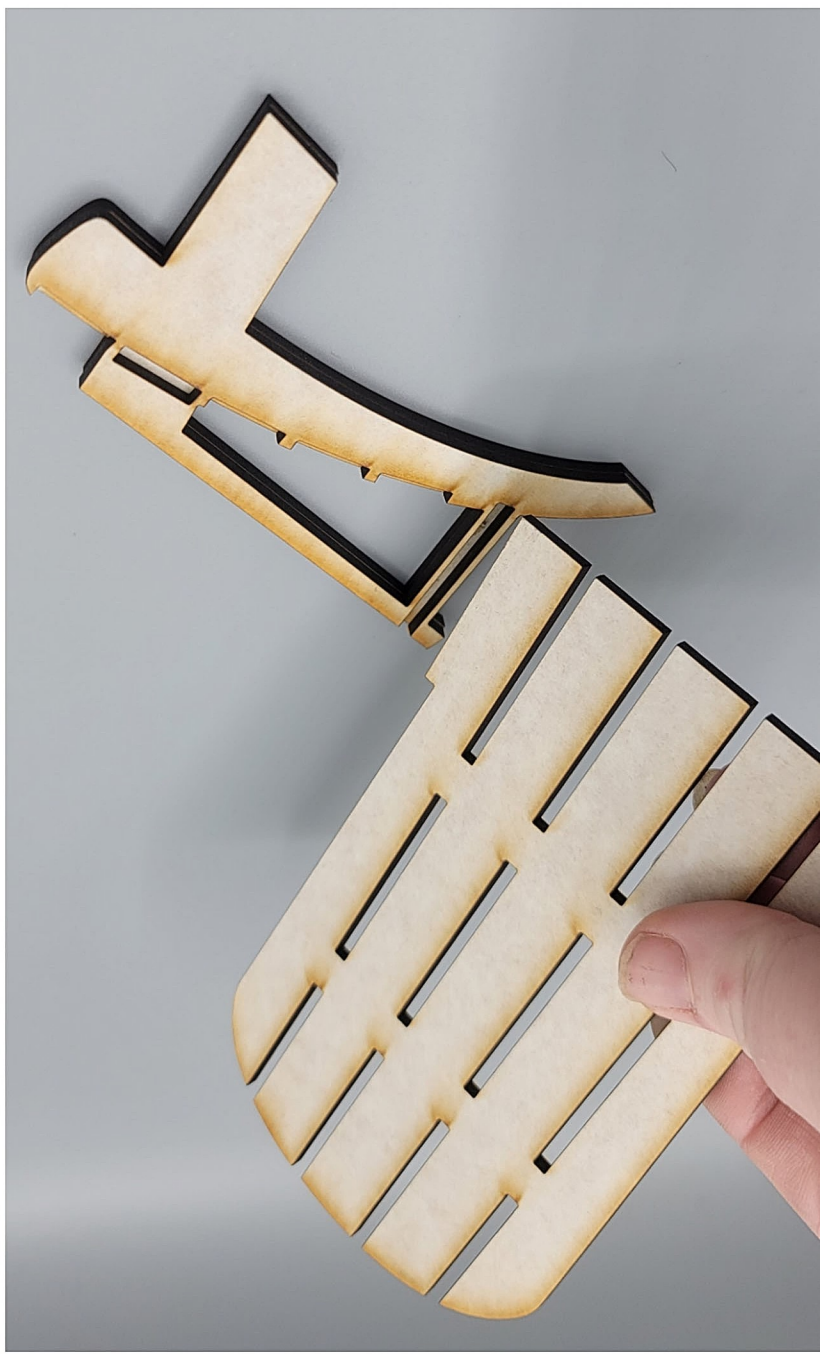
Light sandpaper
clamps or craft clips
paint

Before you begin, peel off the protective masking that coats both sides of each MDF piece. Your kit contains 4 side pieces--two each outer and inner pieces. The inner pieces have slots that hold the chair together, and the outer pieces have a smooth appearance. Using your wood glue, attach an outer and inner piece together for each side and clamp in place to dry. Make sure that the inner piece is on the inside for both right and left sides of the chair.

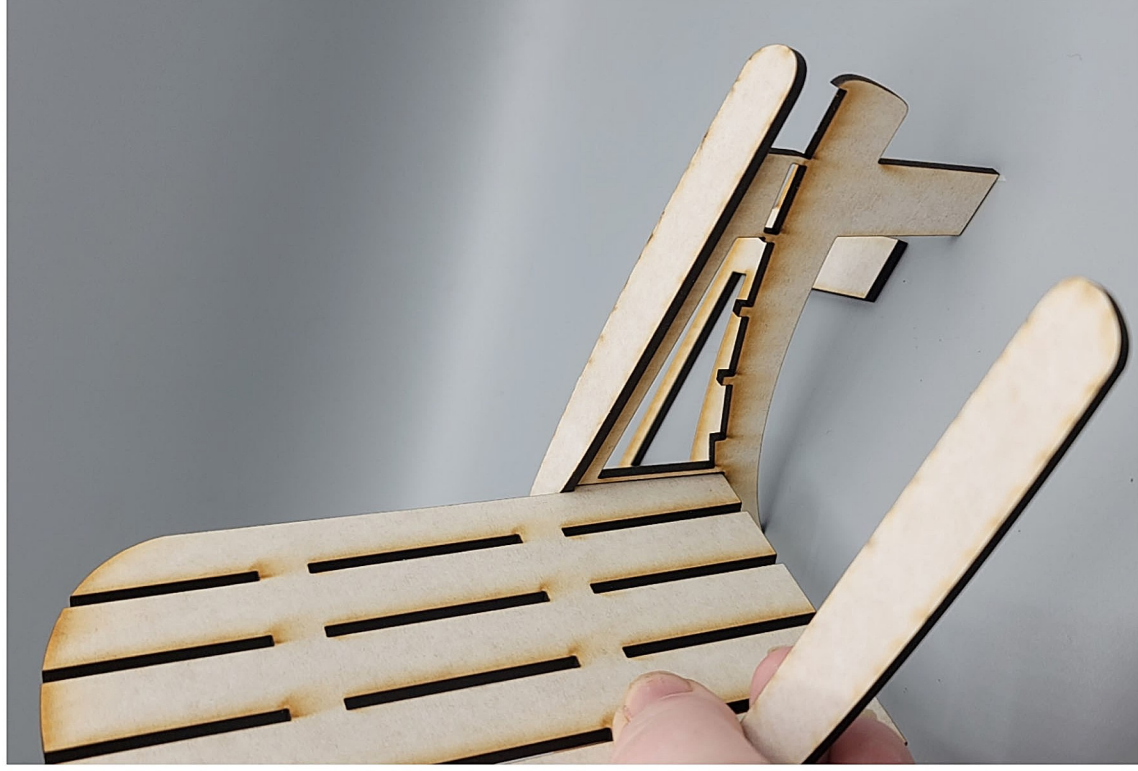




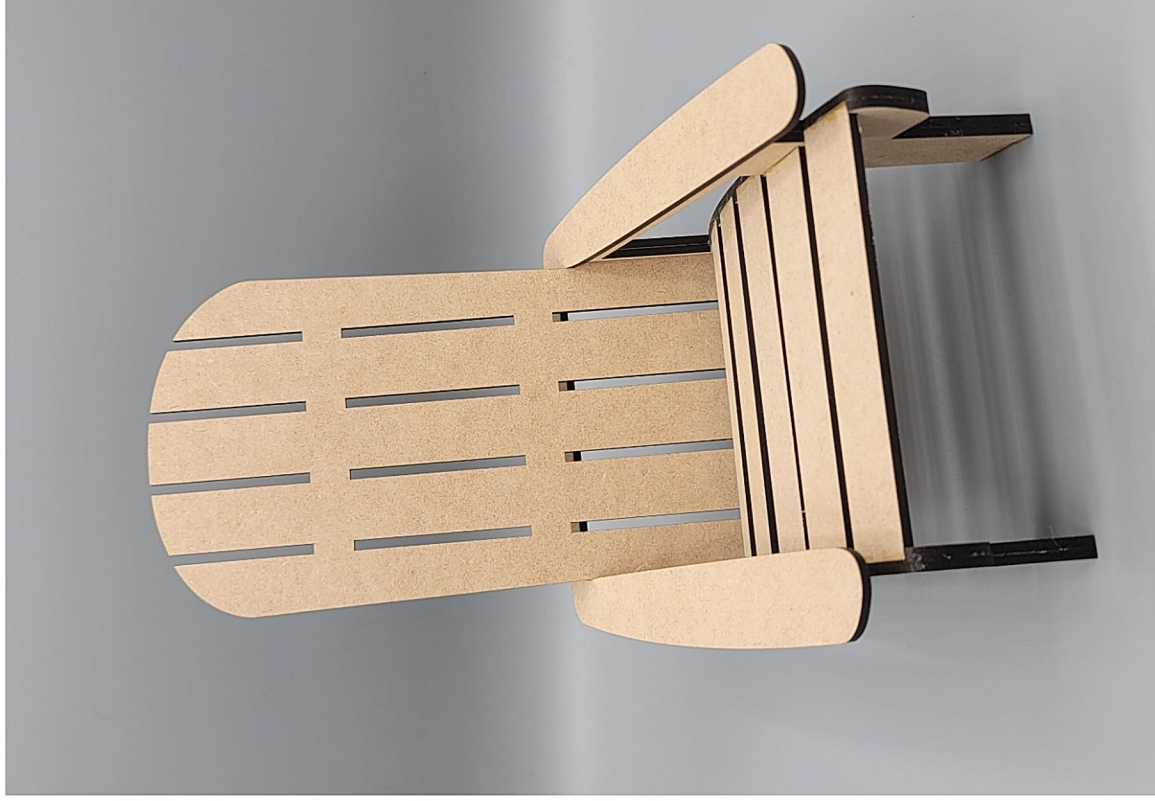
Once the glue has dried, you can insert the tall back piece of the chair into the slots of the side pieces. Glue in place.



Once the back piece is glued into the slots in the side pieces, you can attach the arms. The arms are one C shaped piece---turn sideways to get it over the top of the back, then lower it into place around the bottom of the back and over each arm. Glue the bottom of the arms to the top of the sides.



Now you can glue each of the five seat slats to the slots in the inner chair sides.



Once the glue is dry, give your chair a light sanding to remove any glue residue, and paint!